

**SCHEDULE OF JOINERY:-**

TYPE	DESCRIPTION	WID	HEI
B	FLUSH DOOR	2'0"	7'0"
D1	FLUSH DOOR	2'0"	7'0"
D2	FLUSH DOOR	2'0"	7'0"
W	GLAZED WINDOW	3'6"	4'6"
W1	GLAZED WINDOW	3'0"	4'6"
W2	GLAZED WINDOW	2'6"	4'6"
W3	GLAZED WINDOW	2'0"	4'6"
W4	GLAZED WINDOW	2'0"	4'6"
W5	GLAZED WINDOW	2'0"	4'6"
W6	GLAZED WINDOW	2'0"	4'6"
W7	GLAZED WINDOW	2'0"	4'6"
W8	GLAZED WINDOW	2'0"	4'6"
W9	GLAZED WINDOW	2'0"	4'6"
W10	GLAZED WINDOW	2'0"	4'6"
W11	GLAZED WINDOW	2'0"	4'6"
W12	GLAZED WINDOW	2'0"	4'6"
W13	GLAZED WINDOW	2'0"	4'6"
W14	GLAZED WINDOW	2'0"	4'6"
W15	GLAZED WINDOW	2'0"	4'6"
W16	GLAZED WINDOW	2'0"	4'6"
W17	GLAZED WINDOW	2'0"	4'6"
W18	GLAZED WINDOW	2'0"	4'6"
W19	GLAZED WINDOW	2'0"	4'6"
W20	GLAZED WINDOW	2'0"	4'6"
W21	GLAZED WINDOW	2'0"	4'6"
W22	GLAZED WINDOW	2'0"	4'6"
W23	GLAZED WINDOW	2'0"	4'6"
W24	GLAZED WINDOW	2'0"	4'6"
W25	GLAZED WINDOW	2'0"	4'6"
W26	GLAZED WINDOW	2'0"	4'6"
W27	GLAZED WINDOW	2'0"	4'6"
W28	GLAZED WINDOW	2'0"	4'6"
W29	GLAZED WINDOW	2'0"	4'6"
W30	GLAZED WINDOW	2'0"	4'6"
W31	GLAZED WINDOW	2'0"	4'6"
W32	GLAZED WINDOW	2'0"	4'6"
W33	GLAZED WINDOW	2'0"	4'6"
W34	GLAZED WINDOW	2'0"	4'6"
W35	GLAZED WINDOW	2'0"	4'6"
W36	GLAZED WINDOW	2'0"	4'6"
W37	GLAZED WINDOW	2'0"	4'6"
W38	GLAZED WINDOW	2'0"	4'6"
W39	GLAZED WINDOW	2'0"	4'6"
W40	GLAZED WINDOW	2'0"	4'6"
W41	GLAZED WINDOW	2'0"	4'6"
W42	GLAZED WINDOW	2'0"	4'6"
W43	GLAZED WINDOW	2'0"	4'6"
W44	GLAZED WINDOW	2'0"	4'6"
W45	GLAZED WINDOW	2'0"	4'6"
W46	GLAZED WINDOW	2'0"	4'6"
W47	GLAZED WINDOW	2'0"	4'6"
W48	GLAZED WINDOW	2'0"	4'6"
W49	GLAZED WINDOW	2'0"	4'6"
W50	GLAZED WINDOW	2'0"	4'6"
W51	GLAZED WINDOW	2'0"	4'6"
W52	GLAZED WINDOW	2'0"	4'6"
W53	GLAZED WINDOW	2'0"	4'6"
W54	GLAZED WINDOW	2'0"	4'6"
W55	GLAZED WINDOW	2'0"	4'6"
W56	GLAZED WINDOW	2'0"	4'6"
W57	GLAZED WINDOW	2'0"	4'6"
W58	GLAZED WINDOW	2'0"	4'6"
W59	GLAZED WINDOW	2'0"	4'6"
W60	GLAZED WINDOW	2'0"	4'6"
W61	GLAZED WINDOW	2'0"	4'6"
W62	GLAZED WINDOW	2'0"	4'6"
W63	GLAZED WINDOW	2'0"	4'6"
W64	GLAZED WINDOW	2'0"	4'6"
W65	GLAZED WINDOW	2'0"	4'6"
W66	GLAZED WINDOW	2'0"	4'6"
W67	GLAZED WINDOW	2'0"	4'6"
W68	GLAZED WINDOW	2'0"	4'6"
W69	GLAZED WINDOW	2'0"	4'6"
W70	GLAZED WINDOW	2'0"	4'6"
W71	GLAZED WINDOW	2'0"	4'6"
W72	GLAZED WINDOW	2'0"	4'6"
W73	GLAZED WINDOW	2'0"	4'6"
W74	GLAZED WINDOW	2'0"	4'6"
W75	GLAZED WINDOW	2'0"	4'6"
W76	GLAZED WINDOW	2'0"	4'6"
W77	GLAZED WINDOW	2'0"	4'6"
W78	GLAZED WINDOW	2'0"	4'6"
W79	GLAZED WINDOW	2'0"	4'6"
W80	GLAZED WINDOW	2'0"	4'6"
W81	GLAZED WINDOW	2'0"	4'6"
W82	GLAZED WINDOW	2'0"	4'6"
W83	GLAZED WINDOW	2'0"	4'6"
W84	GLAZED WINDOW	2'0"	4'6"
W85	GLAZED WINDOW	2'0"	4'6"
W86	GLAZED WINDOW	2'0"	4'6"
W87	GLAZED WINDOW	2'0"	4'6"
W88	GLAZED WINDOW	2'0"	4'6"
W89	GLAZED WINDOW	2'0"	4'6"
W90	GLAZED WINDOW	2'0"	4'6"
W91	GLAZED WINDOW	2'0"	4'6"
W92	GLAZED WINDOW	2'0"	4'6"
W93	GLAZED WINDOW	2'0"	4'6"
W94	GLAZED WINDOW	2'0"	4'6"
W95	GLAZED WINDOW	2'0"	4'6"
W96	GLAZED WINDOW	2'0"	4'6"
W97	GLAZED WINDOW	2'0"	4'6"
W98	GLAZED WINDOW	2'0"	4'6"
W99	GLAZED WINDOW	2'0"	4'6"
W100	GLAZED WINDOW	2'0"	4'6"

92 x 90

**SPECIFICATIONS:-**

FOUNDATIONS:  
R.C.C FOOTINGS TO BE LAID OVER BED OF P.C.C 1:4:8 OVER A SAND CUSHION, BRICK SUPPORTED BY PLINTH BEAM.

SUPER STRUCTURE:  
BRICK WORK IN CEMENT MORTAR 1:5 MIX.

R.C.C BEAMS, LINTELS, STAIRS, SLABS, SUNSHADES, ETC., IN 1:2:4 MIX WITH SUITABLE REINFORCEMENT.

FINISHES:  
MOSAIC TILE FLOORING, WALLS ARE PLASTERED WITH C.M. 1:4 MIX AND PAINTED.

JOINERY:  
BEST INDIAN TEAK WOOD AND GOOD QUALITY ALUMINIUM EXTRUSION.

**AREA STATEMENT:-**

SUBT	262.00 Sq ft	24.21 Sq m
FIRST	7381.00 Sq ft	685.71 Sq m

REFERENCE:  
PROPOSED ROAD  
BOUNDARY  
SEWAGE LINE  
WATER LINE

SIGNATURE OF OWNER

SIGNATURE OF LICENCED SUPERVISOR

PRAMOD BALAKRISHNAN  
E.A. No. 142, CLASS I  
No. 5, THIRD FLOOR, 13, SECOND MAIN ROAD,  
NEHRU NAGAR, ADYAR, CHENNAI - 600 020.  
CHENNAI - 600 020.

MR. PRAMOD BALAKRISHNAN, E.A. No. 142

TITLE

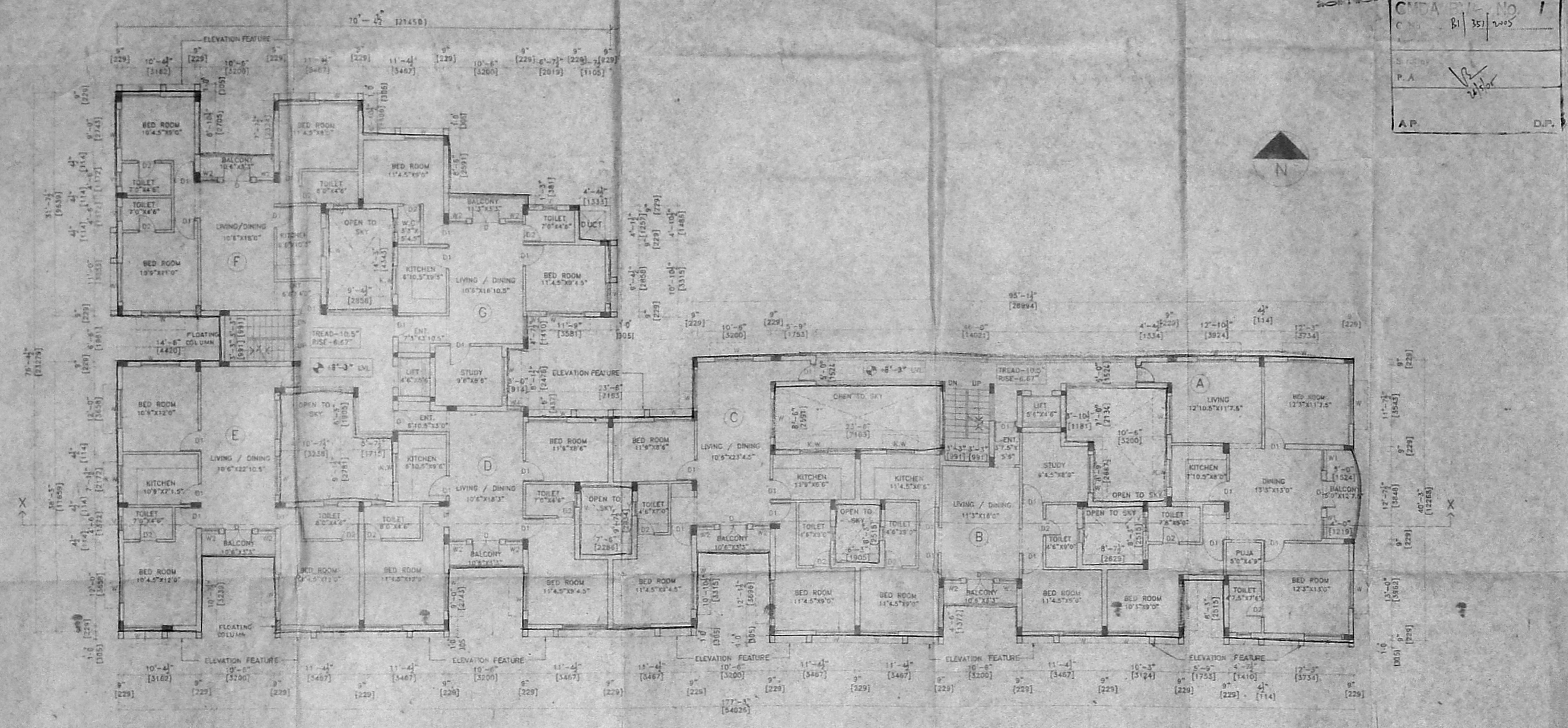
CORPORATION DRAWING

PROJECT  
PLAN SHOWING PROPOSED RESIDENTIAL APARTMENT BUILDING AT VELACHERY HIGH ROAD, SURVEY NO. 356/2 IN VELACHERY VILLAGE, MAMBALAM - GUINDY TALUK, CHENNAI DISTRICT, VELACHERY NO. 137

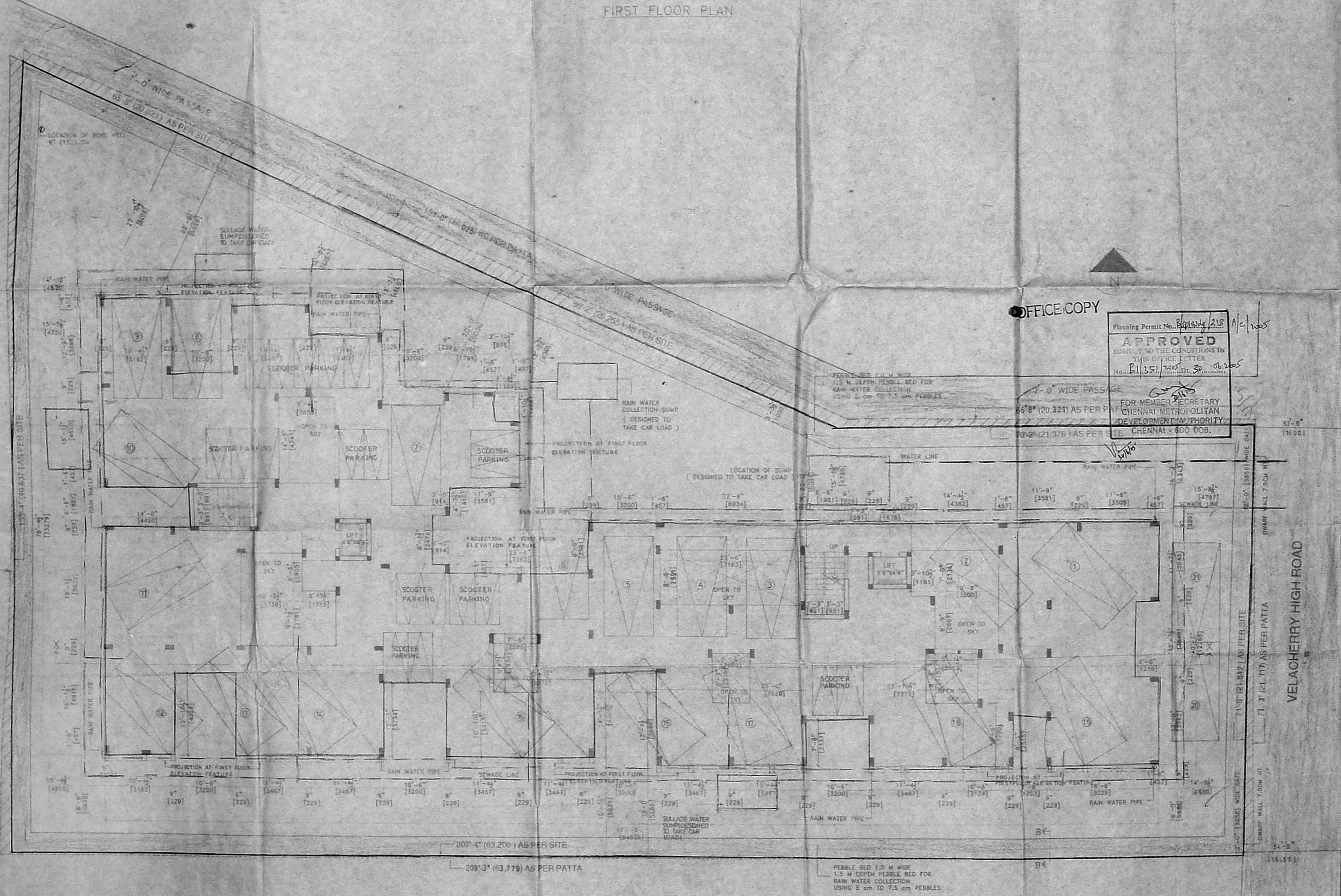
**edifice**  
ARCHITECTURE & INTERIORS  
NO. 5, THIRD FLOOR, 13, SECOND STREET,  
NEHRU NAGAR, ADYAR, CHENNAI - 600 020.  
☎ 24412025, 24425941. FAX: 24422168

PROJ NO / ORG NO - C 01

SCALE: 1" TO 8'-0"  
DATE: DEC 2004



FIRST FLOOR PLAN



SITE CUM STILTS FLOOR PLAN

OFFICE COPY

Planning Permit No. B/135/2005  
APPROVED  
SUBJECT TO THE CONDITIONS IN THIS OFFICE LETTER  
No. B/135/2005, Dt. 30.01.2005

FOR MEMBER SECRETARY  
CHENNAI METROPOLITAN  
DEVELOPMENT AUTHORITY  
CHENNAI - 600 008.

CMDA (B) / No. 1  
 No. B1/35/2005  
 F.A.  
 A.P.

TYPE	DESCRIPTION	WID	HEI
01	FLOOR DOOR	4'0"	7'0"
02	FLOOR DOOR	7'0"	7'0"
03	FLOOR DOOR	7'0"	7'0"
04	GLAZED WINDOW	6'0"	4'0"
05	GLAZED WINDOW	3'0"	4'0"
06	GLAZED WINDOW	3'0"	4'0"
07	GLAZED WINDOW	3'0"	4'0"
08	GLAZED WINDOW	3'0"	4'0"
09	GLAZED WINDOW	4'0"	3'0"
10	GLAZED WINDOW	4'0"	3'0"
11	GLAZED WINDOW	3'0"	3'0"

9/192


**SPECIFICATIONS:**  
 FOUNDATIONS:  
 R.C.C FOOTINGS TO BE LAID OVER BED OF P.C.C 1:4:8 OVER A SAND CUSHION BRICK SUPPORTED BY PLINTH BEAM.  
 SUPER STRUCTURE:  
 BRICK WORK IN CEMENT MORTAR 1:5 MIX.  
 R.I.C. BEAMS, LINTELS, STAIRS, SLABS, SHIRSHADES ETC. IN 1:2:4 MIX WITH SUITABLE REINFORCEMENT.  
 FINISHES:  
 MOSAIC TILE FLOORING, WALLS ARE PLASTERED WITH C.M 1:4 MIX AND PAINTED.  
 JOINERY:  
 BEST INDIAN TEAK WOOD AND GOOD QUALITY ALUMINIUM EXTRUSION.

**AREA STATEMENT:**

SECOND	7175.00 Sq. ft.	658.60 Sq. ft.
THIRD	7175.00 Sq. ft.	658.60 Sq. ft.

**REFERENCE**  
 PROPOSED ROAD  
 BOUNDARY  
 SEWAGE LINE  
 WATER LINE

**SIGNATURE OF OWNER**  


**SIGNATURE OF LICENSED SURVEYOR**  


**PRAMOD BALAKRISHNAN**  
 I.A. No. 142, CLASS I  
 No. 5, THIRD FLOOR, 13, SECOND MAIN ROAD,  
 NEHRU NAGAR, ADYAR, CHENNAI-600 030.

MR PRAMOD BALAKRISHNAN, P.A. NO. 142

**TITLE**  
 CORPORATION DRAWING.

**PROJECT**  
 PLAN SHOWING PROPOSED RESIDENTIAL APARTMENT BUILDING AT VEELACHERY HIGH ROAD SURVEY NO. 366/2 INVELACHERY VILLAGE, MAMBALAM GUINDY TALUK, CHENNAI DISTRICT, VILLAGE NO.137.

**edifice**  
 ARCHITECTURE INTERIORS  
 NO. 5, THIRD FLOOR, 13, SECOND STREET,  
 NEHRU NAGAR, ADYAR, CHENNAI - 600 030.  
 T. 24412055, 24425944 FAX: 24423168.

PROJ NO:      BRG NO: C 02  
 SCALE: 1" = 10'-0"      REVISIONS  
 DATE: DEC 2004

OFFICE COPY

Planning Permit No. B1/35/2005  
**APPROVED**  
 SUBJECT TO THE CONDITIONS IN THE PLANNING PERMIT  
 No. B1/35/2005  
 28-04-2005  
 CHIEF EXECUTIVE OFFICER  
 CHENNAI-600 008.

**THIRD FLOOR PLAN**

**SECOND FLOOR PLAN**

**SECTION-XX**

OVER HEAD WATERTANK ABOVE  
[4343 X 1981 X 1829]  
[SCIENTIFICALLY CLOSED]

OFFICE COPY

Planning Permit No. P/151/2005  
**APPROVED**  
SUBJECT TO THE CONDITIONS IN  
THIS OFFICE LETTER  
No. P/151/2005  
FOR MEMBER SECRETARY  
CHENNAI METROPOLITAN  
DEVELOPMENT AUTHORITY  
CHENNAI - 600 008.

CMDA (B)/77/NO. 1

C. No. B/1351/2005

Asst.

Scrutiny  
P. A.

SCHEDULE OF JOINERY

TYPE	DESCRIPTION	WID	HEI
D	FLUSH DOOR	2'0"	7'0"
D1	FLUSH DOOR	3'0"	7'0"
D2	FLUSH DOOR	2'6"	7'0"
W	GLAZED WINDOW	5'6"	4'6"
W1	GLAZED WINDOW	3'0"	4'6"
W2	GLAZED WINDOW	2'6"	4'6"
W3	GLAZED WINDOW	4'0"	4'6"
W4	GLAZED WINDOW	3'0"	4'6"
W5	GLAZED WINDOW	4'0"	4'6"
W6	GLAZED WINDOW	4'0"	4'6"
V	GLAZED VENTILATOR	2'0"	3'0"

92 X 91

SPECIFICATIONS:-

FOUNDATIONS  
R.C.C FOOTINGS TO BE LAID OVER BED OF P.C.C 1:4:8 OVER A SAND CUSHION, BRICK SUPPORTED BY PLINTH BEAM

SUPER STRUCTURE  
BRICK WORK IN CEMENT MORTAR 1:5 MIX.

R.C.C  
BEAMS, LINTELS, STAIRS, SLABS, SUNSHADES ETC., IN 1:2:4 MIX WITH SUITABLE REINFORCEMENT.

FINISHES  
MOSAIC TILE FLOORING, WALLS ARE PLASTERED WITH C.M 1:4 MIX AND PAINTED.

JOINERY  
BEST INDIAN TEAK WOOD AND GOOD QUALITY ALUMINIUM EXTRUSION.

CAR PARKING DETAILS

FLOOR	NO. OF CARS PROVIDED	NO. OF CARS REQUIRED
FIRST FLOOR	6 NOS.	6 NOS.
SECOND FLOOR	6 NOS.	6 NOS.
THIRD FLOOR	6 NOS.	6 NOS.
FOURTH FLOOR	3 NOS.	4 NOS.
TOTAL	21 NOS.	22 NOS.

TOTAL NO. OF CARS REQUIRED : 22 NOS.  
TOTAL NO. OF CARS PROVIDED : 21 NOS.

AREA STATEMENT:-

BLT. AREA

AS PER PATTI	AS PER DOCUMENTS	AS PER SITE
20455.00 Sq. Ft. 1901.38	20473.00 Sq. Ft. 1903.98	19567.00 Sq. Ft. 1817.80

UTILITY

FLOOR	BLT. AREA	BLT. AREA
FIRST	7581.00 Sq. Ft. 701.91	7581.00 Sq. Ft. 701.91
SECOND	775.00 Sq. Ft. 71.86	775.00 Sq. Ft. 71.86
THIRD	775.00 Sq. Ft. 71.86	775.00 Sq. Ft. 71.86
FOURTH	421.00 Sq. Ft. 39.15	421.00 Sq. Ft. 39.15
TOTAL	20452.00 Sq. Ft. 1903.98	20452.00 Sq. Ft. 1903.98

PLLOT COVERAGE : 37.72%

REFERENCE

PROPOSED ROAD  
BOUNDARY  
SEWAGE LINE  
WATER LINE

SIGNATURE OF OWNER

*[Signature]*

SIGNATURE OF LICENCED SURVEYOR

PRAMOD BALAKRISHNAM  
R.A. No. 142 CLASS I  
No. 5, THIRD FLOOR, 13, SECOND MAIN ROAD,  
MAMBALAM, ADVAR, CHENNAI - 600 020.

MR. PRAMOD BALAKRISHNAM, R.A. NO. 142

TITLE

CORPORATION DRAWING

PROJEC PLAN SHOWING PROPOSED RESIDENTIAL BUILDING AT VELACHERY HIGH ROAD SURVEY, NO:3662, IN VELACHERY VILLAGE, MAMBALAM - GUNDI TALUK, CHENNAI DISTRICT, VILLAGE NO:137.

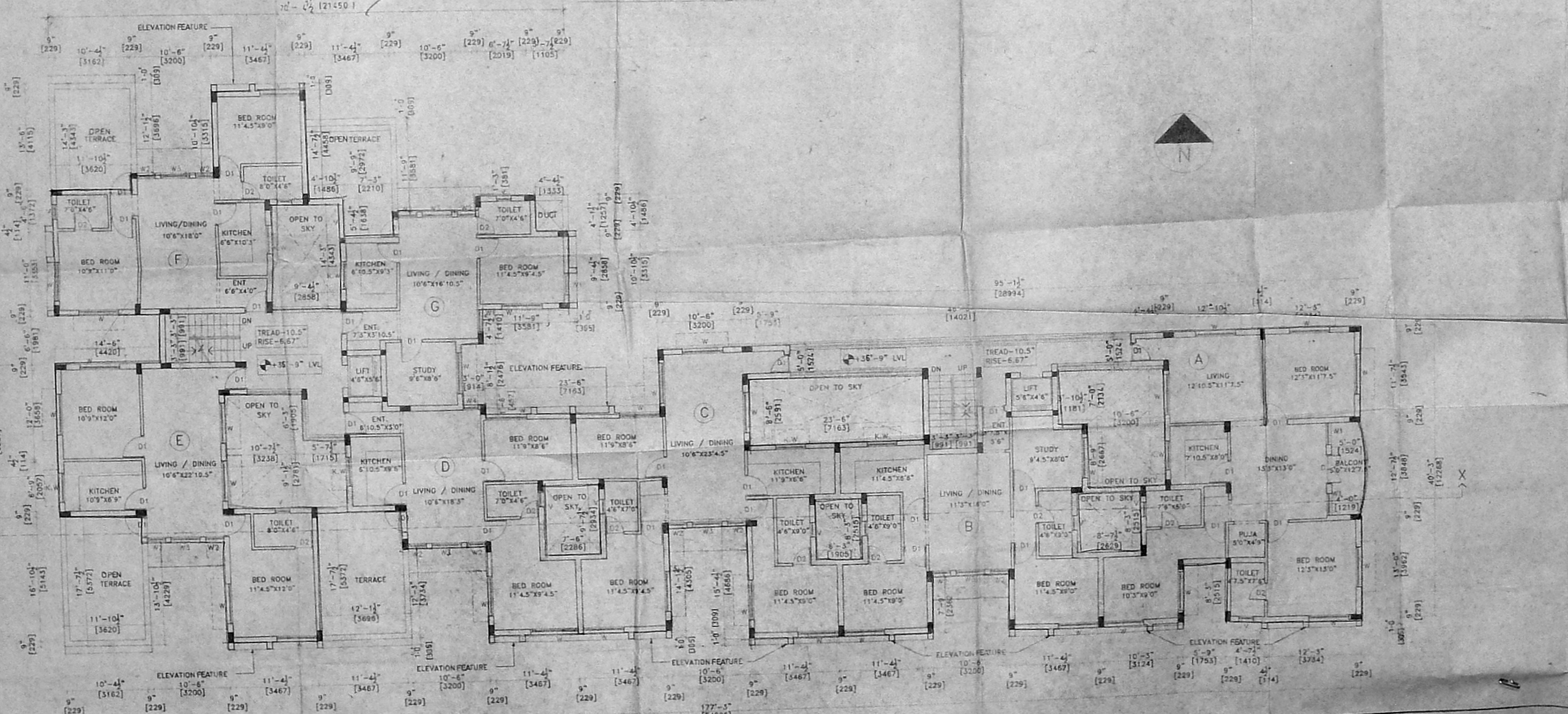
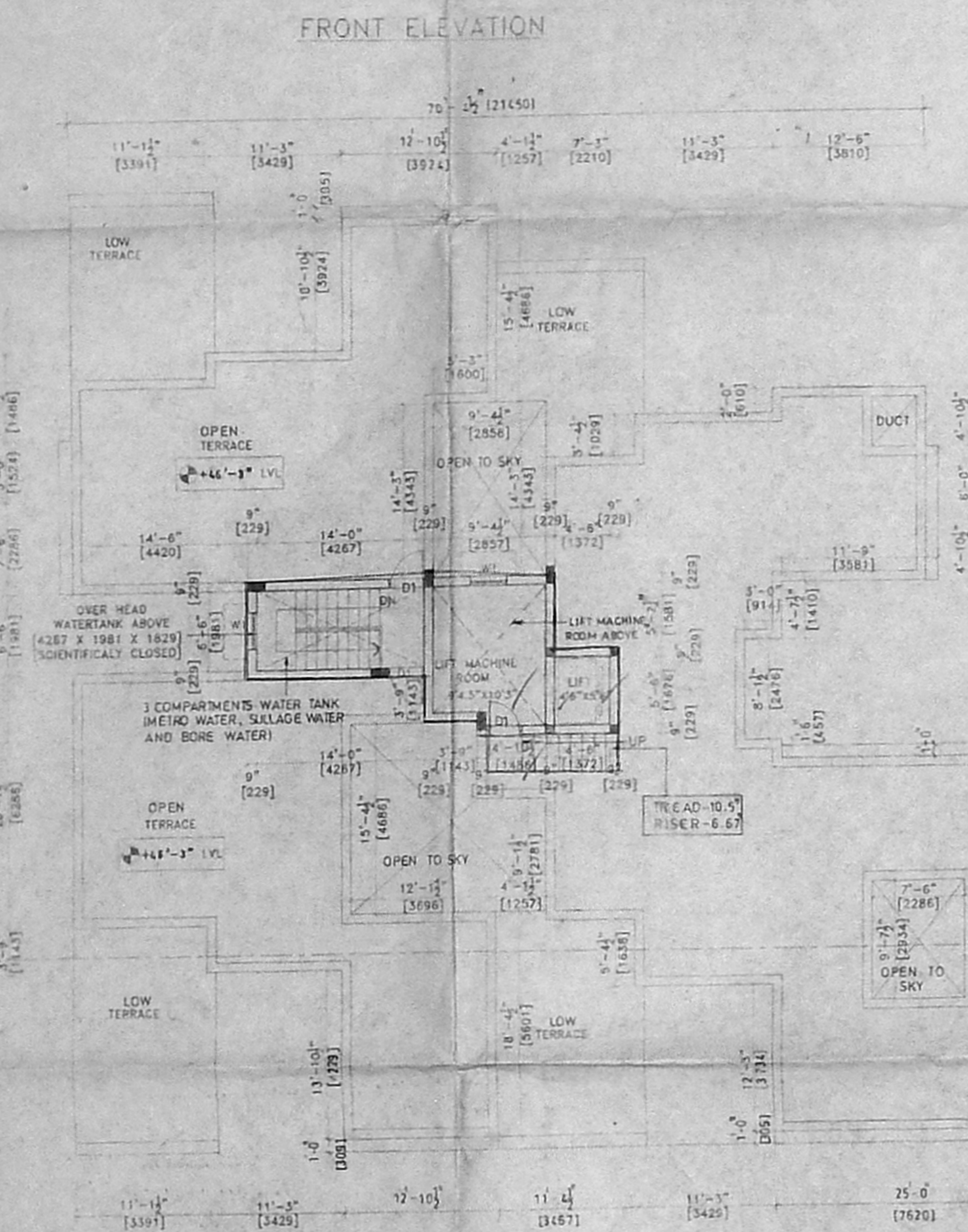
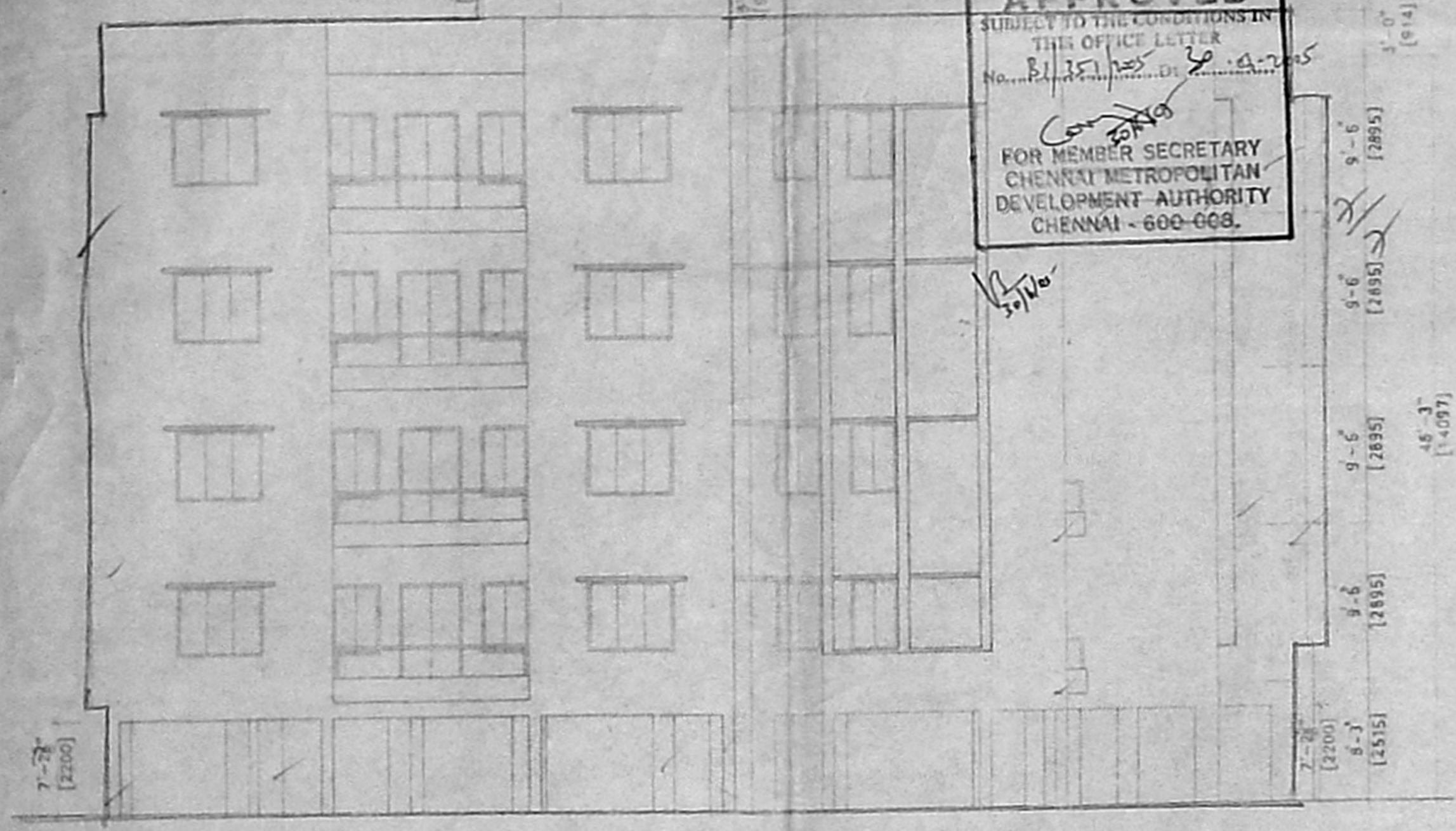
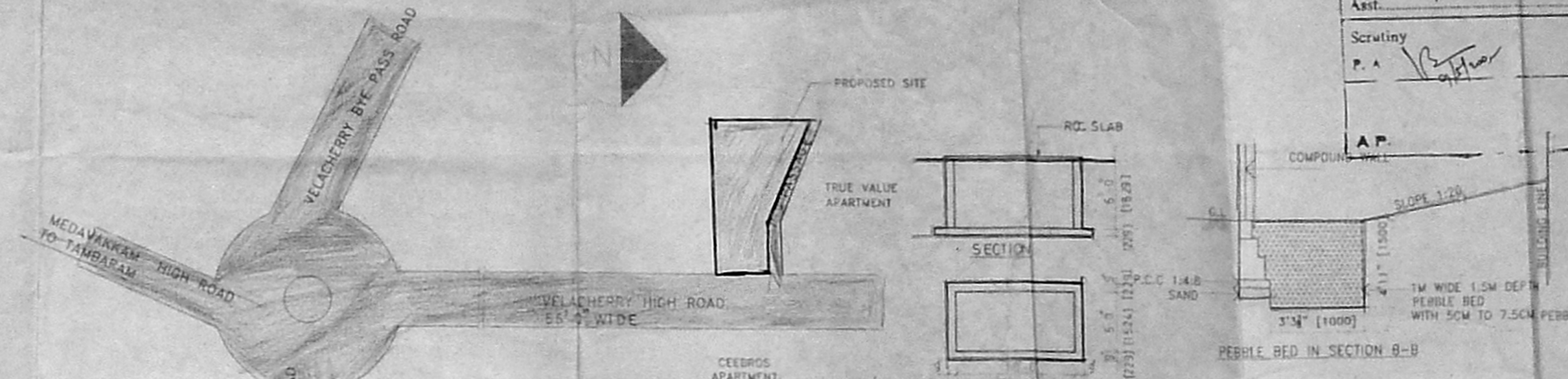
edifice

ARCHITECTURE & INTERIORS  
NO. 5, THIRD FLOOR, 13, SECOND STREET,  
MAMBALAM, ADVAR, CHENNAI - 600 020.  
P. 24413025, 24425941, FAX: 24422188.

PROJ. NO. DRC NO. C 03

SCALE 1" = 80'

DATE DEC 2004



FOURTH FLOOR PLAN